

## **TRAFFIC MANAGEMENT**

### **TRAFFIC SIGNAL AND STREET LIGHT POLE INSPECTION**

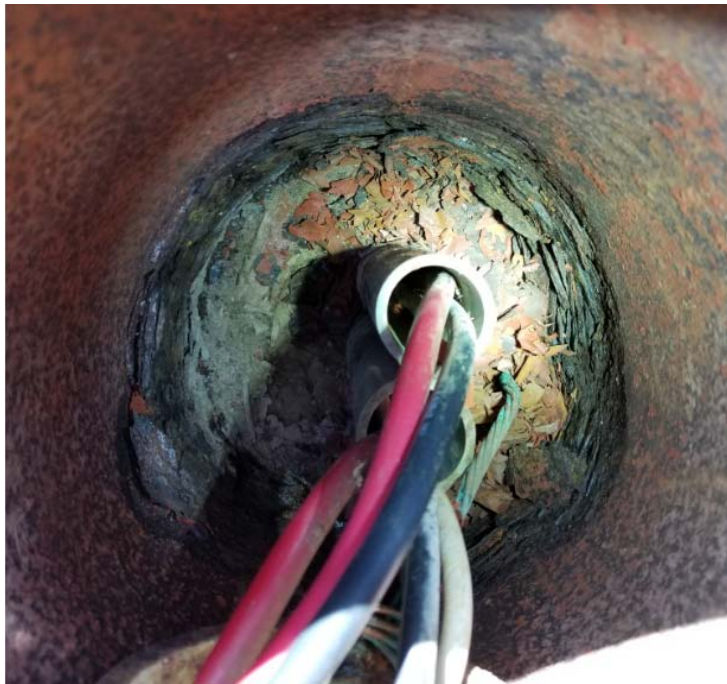
The intent of this procedure is to establish guidelines for the inspection of traffic related poles. The guidelines established herein shall be the minimum level of inspection required and be used to determine when replacement of existing poles is required. Poles that are determined for replacement shall be documented by location and shall be marked with a 2" diameter dot of fluorescent orange marking paint on the pole that will be clearly visible from the adjacent travel way. The dot shall be at a height of 8' from finish grade. A written record of all poles inspected shall be maintained and shall indicate the status and physical address/location of each pole.

The person performing the inspections "Inspector" shall open each hand hole cover for all poles located within the project area. For hand hole covers that have a locking device installed the Inspector shall contact Clark County Traffic Operations at (702) 455-7546 for access. For hand hole covers that have been welded in place the Inspector shall cut the welds using a thin profile abrasive wheel making sure not to damage the hand hole cover or the adjacent hand hole opening. The inspector shall collect all dirt and debris from inside the base of the pole using a vacuum. The debris shall be checked for content as part of the pole inspection. Poles found to have flakes of paint are not cause for replacement. Poles found to have chunks of metal are cause for replacement. (fig 1)



**Chunks of metal are cause for replacement (fig 1)**

The Inspector shall use a video borescope to take video or photographs of the inside of the pole. The video or photos shall be used to determine the amount of damage to the pole. Poles showing metal flaking shall be marked for replacement.



**Metal flaking indicating pole replacement (fig 2)**



**Metal flaking and hole in pole, pole needs replacement (fig 3)**

Inspector shall remove the base bolt cover and inspect the outside of the pole. Poles found to have metal chunks missing or have open holes are cause for replacement.



**Metal chunks missing pole needs replacement (fig 4 & 5)**





**Examples of metal expansion replacement required (fig 6 & 7)**

Paint flaking is not an indication that a pole requires replacement.



**Paint flaking not cause for replacement (fig 8)**



**Example of pole with rust that does not require replacement (fig 9)**

For all poles not marked for replacement Base bolt covers that have been removed for inspection shall be reinstalled onto the base of the pole. All hand hole covers removed for pole inspection shall be reattached regardless of whether the pole is marked for replacement. All hand hole covers that were previously welded will be welded in place except for poles that are marked for replacement.